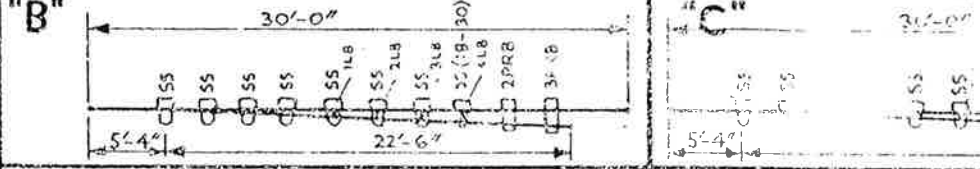
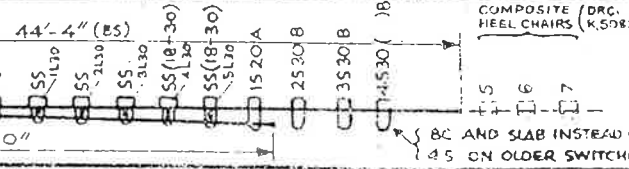
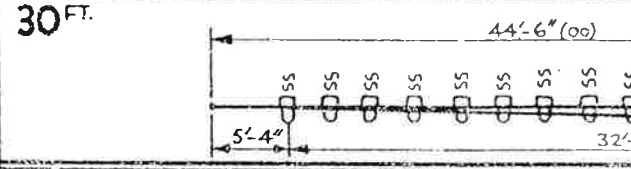
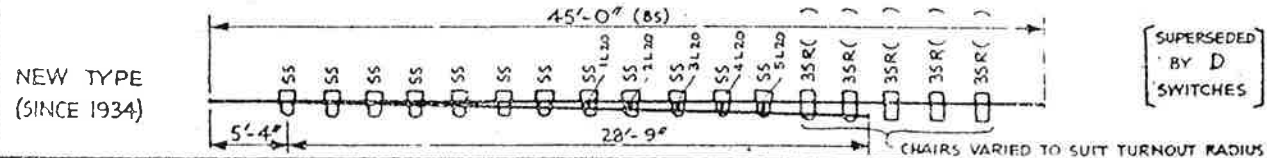
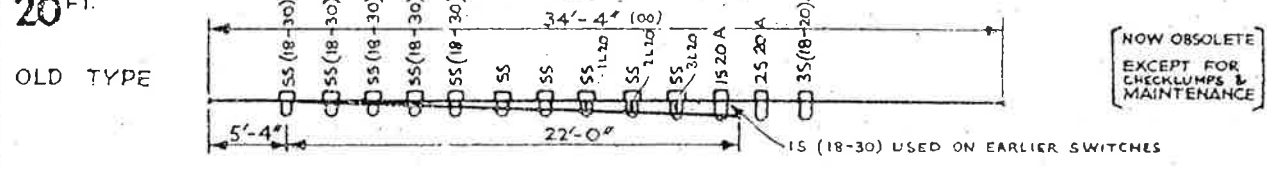
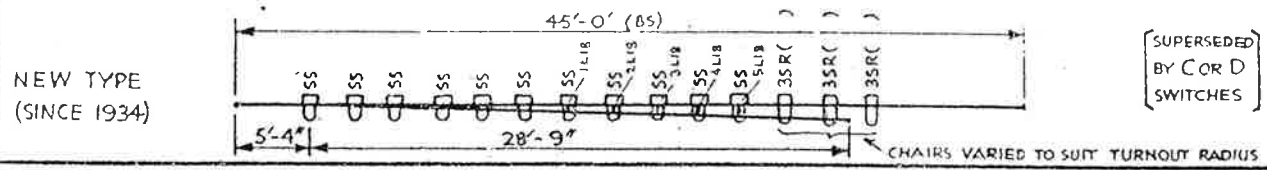
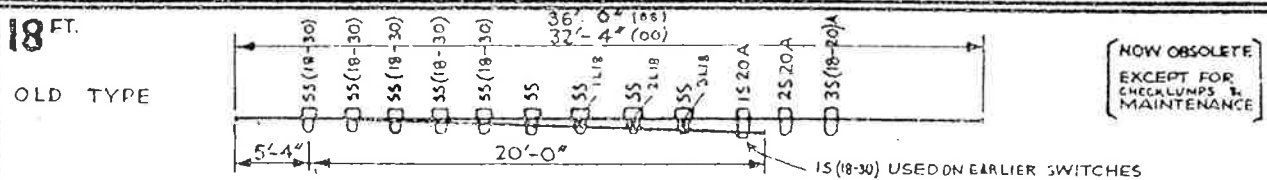
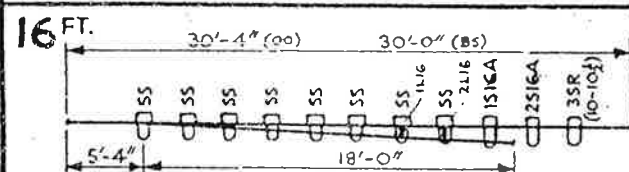
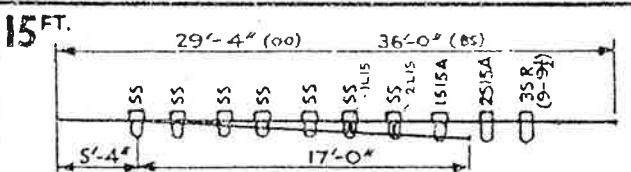
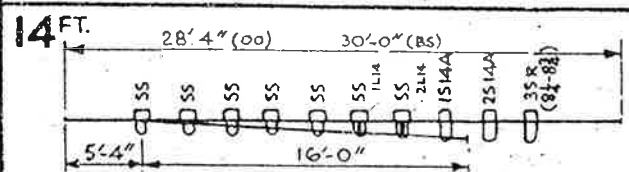
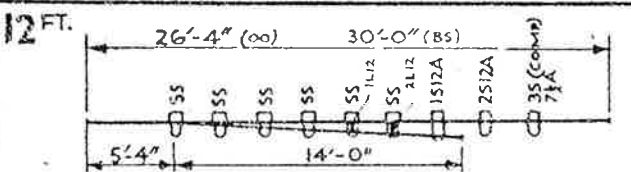
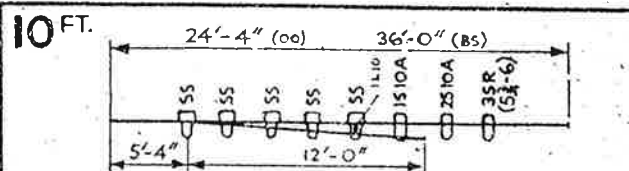
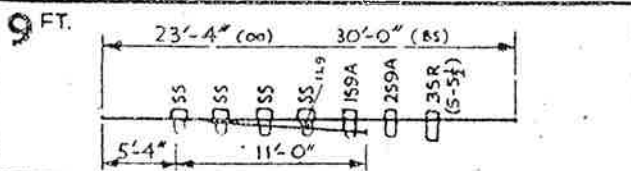


PERMANENT WAY NOTES

ARRANGEMENT OF SWITCH CHAIRS & SWITCH BLOCKS

(FOR DETAILS OF CHAIRS SEE "CHAIRS (3) & (4) - DRGS. R1737-8)

THESE NOTES ARE INTENDED FOR THE GUIDANCE AND ASSISTANCE OF STAFF ENGAGED UPON PERMANENT WAY WORK. THEY DO NOT IN ANY WAY MODIFY OR AMEND THE INSTRUCTIONS LAID DOWN IN E.D.I., STANDARD DRAWINGS, CIRCS., ETC., WHICH SHOULD BE REFERRED TO IN ALL CASES.



TOE OPENINGS.

| SWITCHES | OLD | NEW |
|-----------------|--------|--------|
| 9-16 FT. | 3 3/4" | 4 1/4" |
| WITH CHECK LUMP | 4 1/2" | 4 1/2" |
| 18-30 FT. | 4 1/2" | 4 1/2" |
| B, C, D | 4 1/4" | 4 1/4" |

SLE CIRC No 9/29 10733

"O" (RAMPED) SLIDE CHAIRS ARE NO LONGER SUPPLIED ON ANY SWITCHES.

FOR CHAIRING OF SWITCHES WITH CHECK LUMPS SEE P WAY NOTES R. 3793

THE CHAIRS, ABOVE MARKED A, B OR R, WILL BE "B, A OR L RESPECTIVELY FOR OPPOSITE HALF-PAIR OF SWITCHES SEE FOOTNOTE TO "CHAIRS (4)" DRG. R1738